

Working in the ENSY CLOUD system

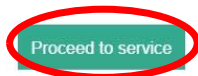
Connecting to a device in ENSY CLOUD with installer invitation



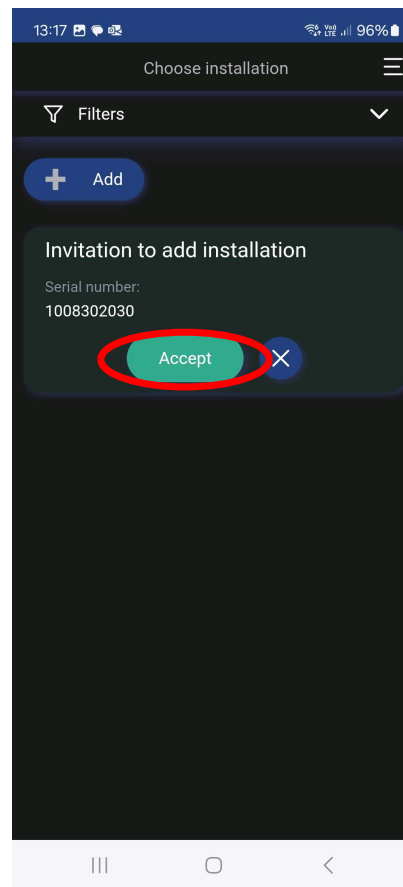
1. Click the link in the invitation email and create an account

The invitation to Ensy!

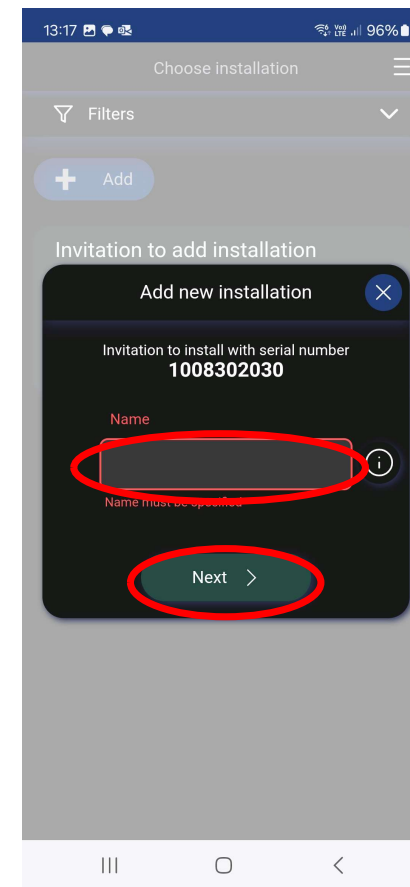
You have received the invitation to use the installation on the Ensy!



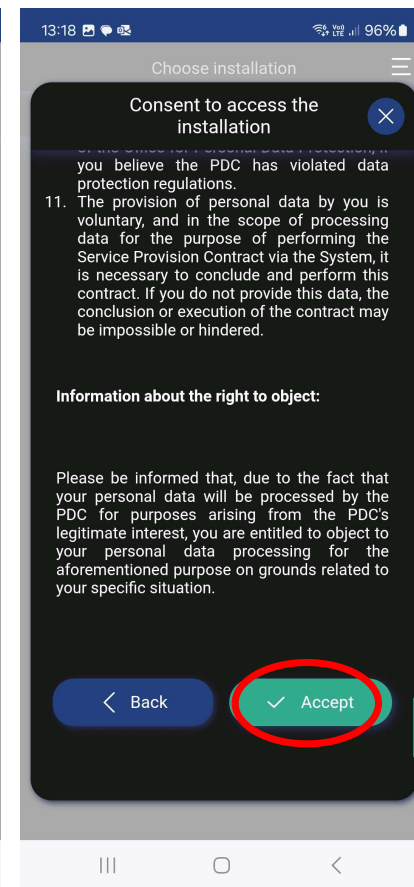
2. Accept the invitation



3. Enter the device name



4. Accept



Working in the ENSY CLOUD system

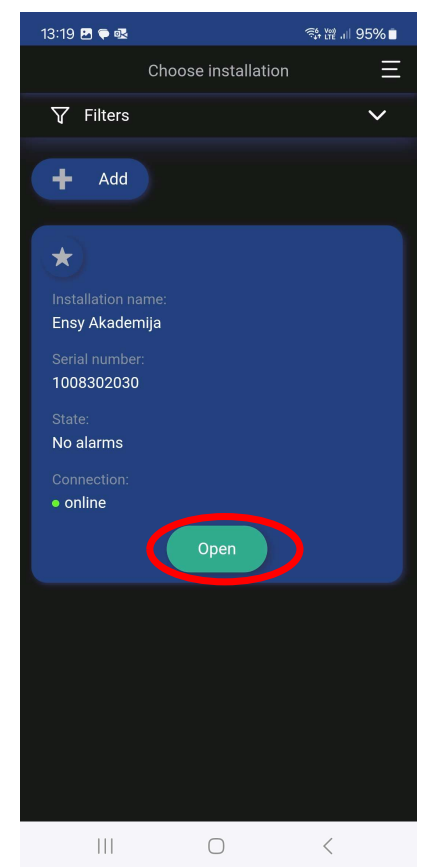
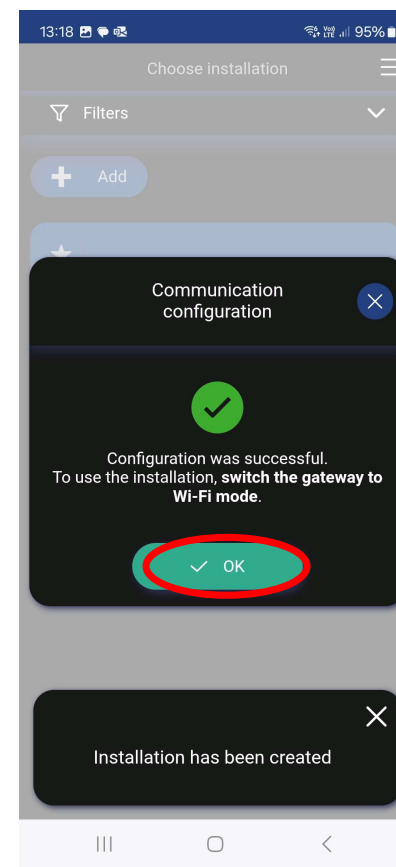
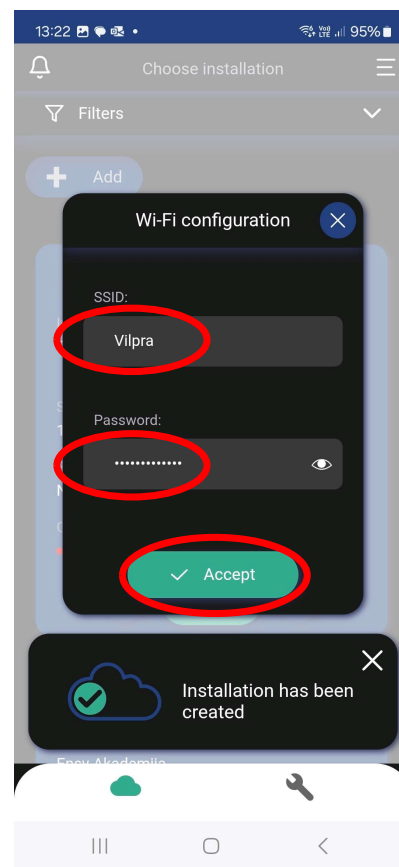
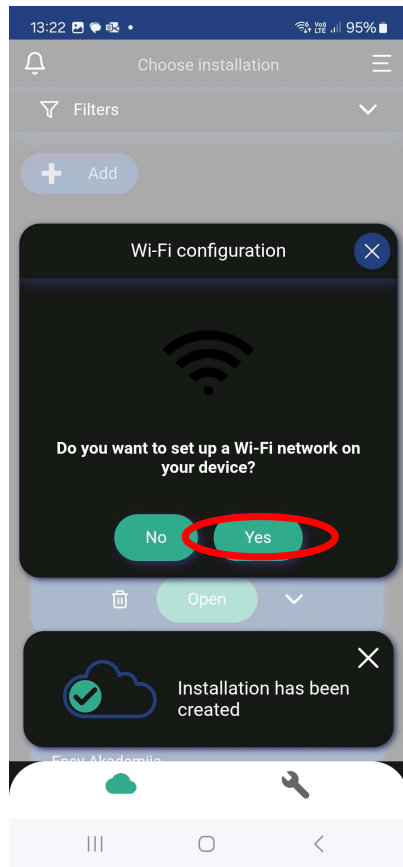
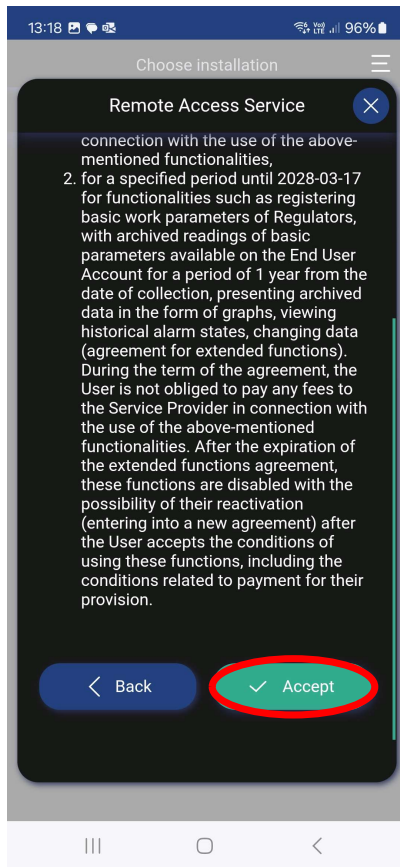
Connecting to a device in ENSY CLOUD with installer invitation



5. Accept

6. Configure Wi-Fi (only 2.4GHz)

7. Choose added instalation

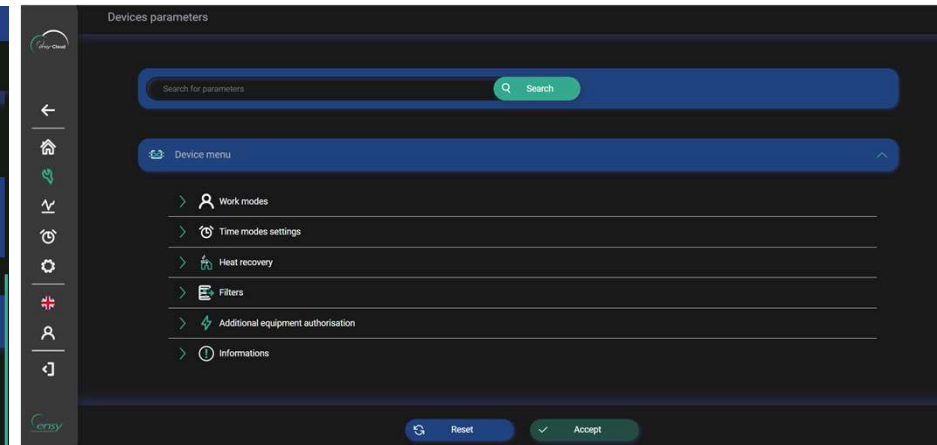
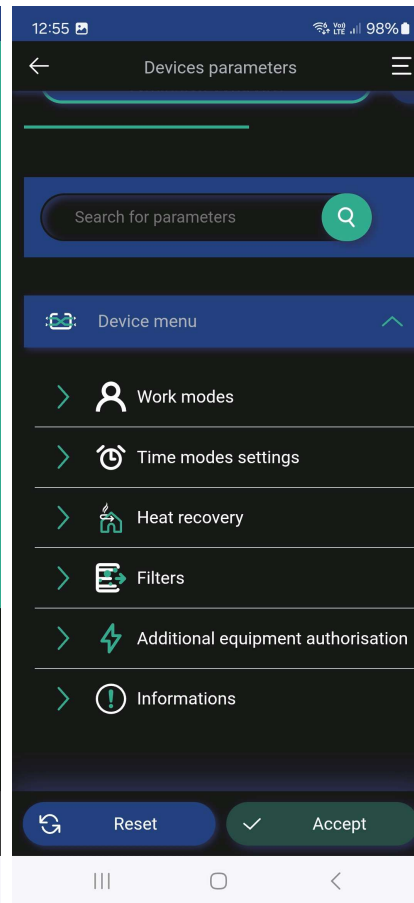
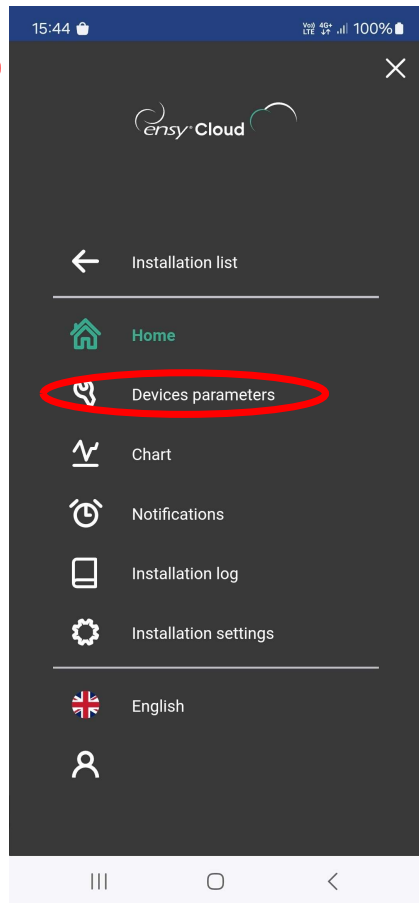
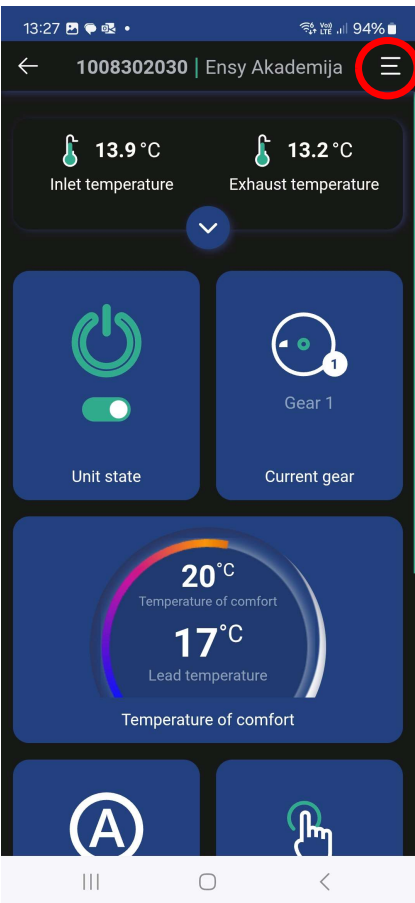


Working in the ENSY CLOUD system

Connecting to a device in ENSY CLOUD with installer invitation



8. Manage the device through the app or browser



Working in the ENSY CLOUD system

Connecting to a device in ENSY CLOUD without installer invitation



iOS



Android

After downloading and installing the Ensy Cloud mobile application, enable it on your mobile device.
Log in to your user account. If there is no active account, please create one.

Working in the ENSY CLOUD system



Connecting to a device in ENSY CLOUD without installer invitation

Create an account: enter your email and a chosen password, mark the required fields. After receiving the email, confirm your account and log in

12:42 99%

EN

ensy Cloud

Forgot password?
Resend confirmation e-mail

Sign in

Create account

12:36 100%

E-mail

Password
digit, lowercase, capital letter, special character, 8-20 characters

☐ *I declare that I have read and accepted the [terms and conditions](#) of the Ensy Cloud System.

☐ *I declare that I have read ([the information clause](#)) on the processing of personal data

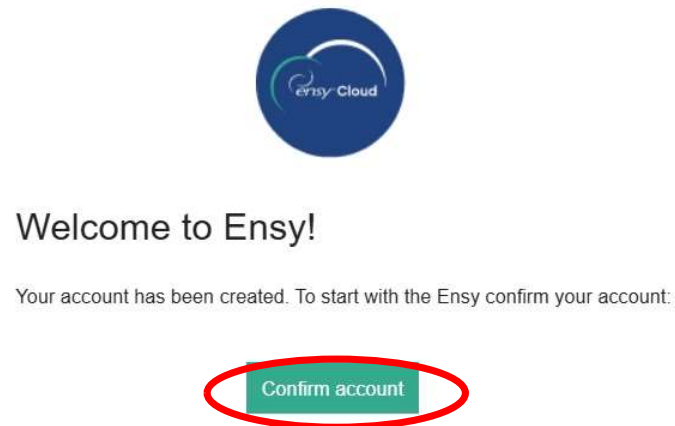
☐ Consent to processing of personal data for marketing purposes ([read more](#))

☐ Consent to receiving commercial information by e-mail and SMS/MMS ([read more](#))

☐ Consent to marketing communication via telephone calls ([read more](#))

☐ I'm not a robot reCAPTCHA Privacy - Terms

Sign up



12:42 99%

EN

ensy Cloud

Forgot password?
Resend confirmation e-mail

Sign in

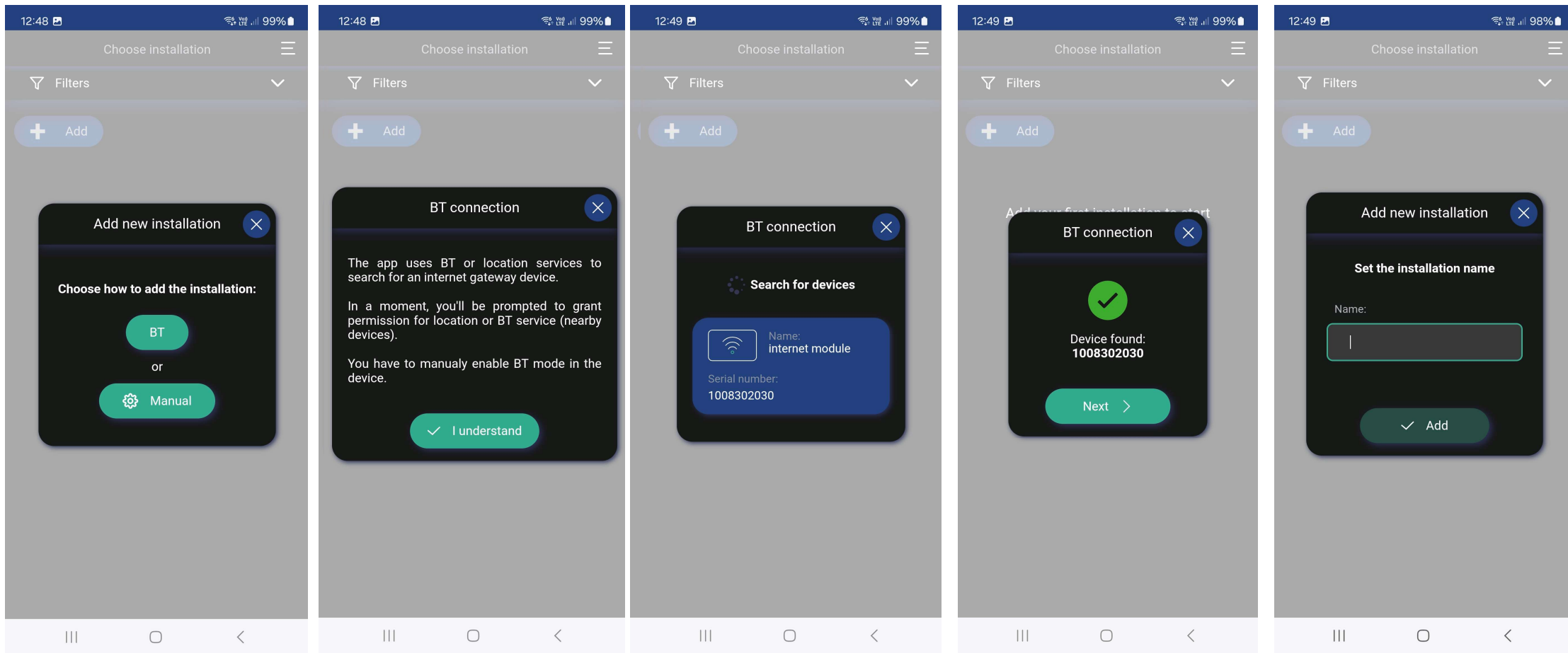
Create account

Working in the ENSY CLOUD system



Connecting to a device in ENSY CLOUD without installer invitation

Select Add and BT. Ensure the controller is in Bluetooth mode -indicated by a rapid LED blink next to the connection icon. Otherwise, hold the power button for 5 sec. to switch the module to Bluetooth mode, then confirm. Select the detected device and press Next, then name the device and press Add

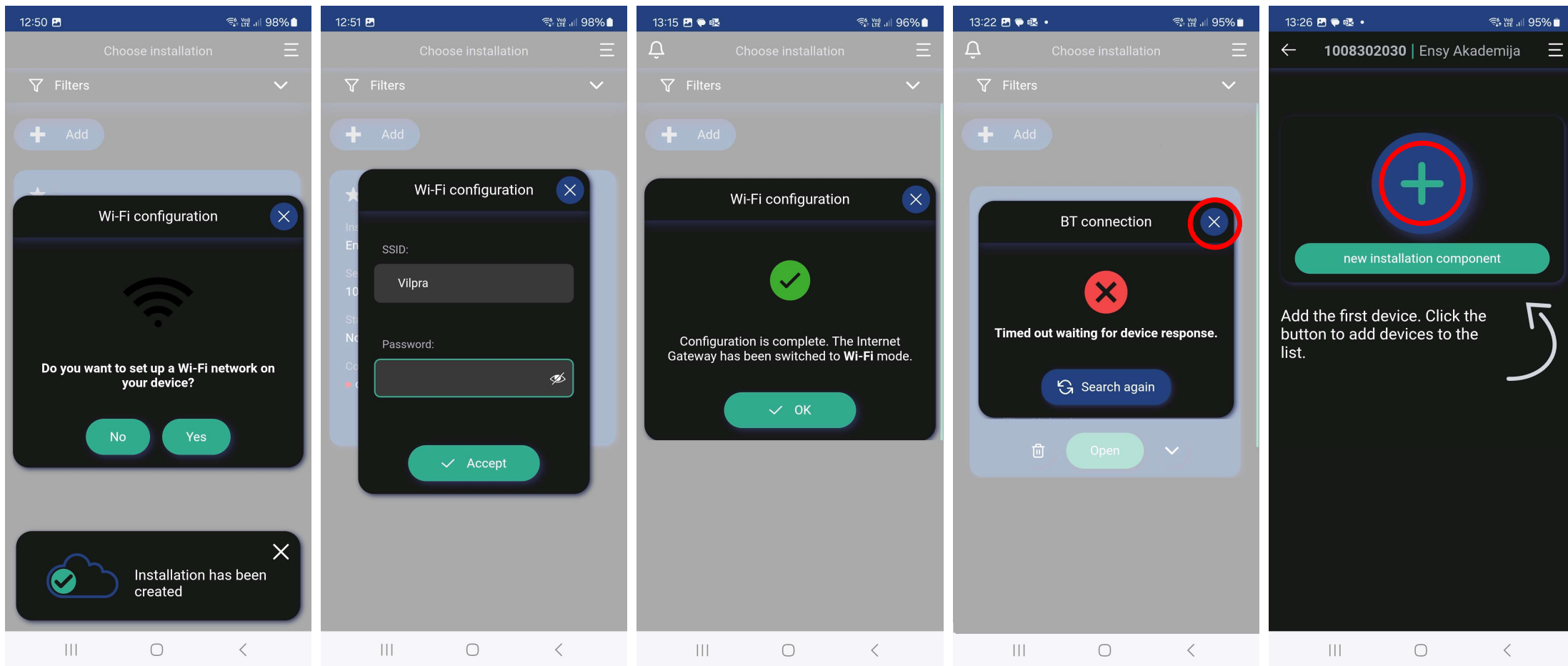


Working in the ENSY CLOUD system

Connecting to a device in ENSY CLOUD without installer invitation



Configure Wi-Fi. Please note that the device does not support 5GHz Wi-Fi frequency, only 2.4Ghz. After configuration, the controller will switch to Wi-Fi operation mode. While switching modes you may occasionally receive a notification that the Bluetooth connection has been lost, just press Close and wait for the installation to go online. A steady connection LED on panel indicates successful Wi-Fi connection. Then select installation press Open and then simply press Add ...

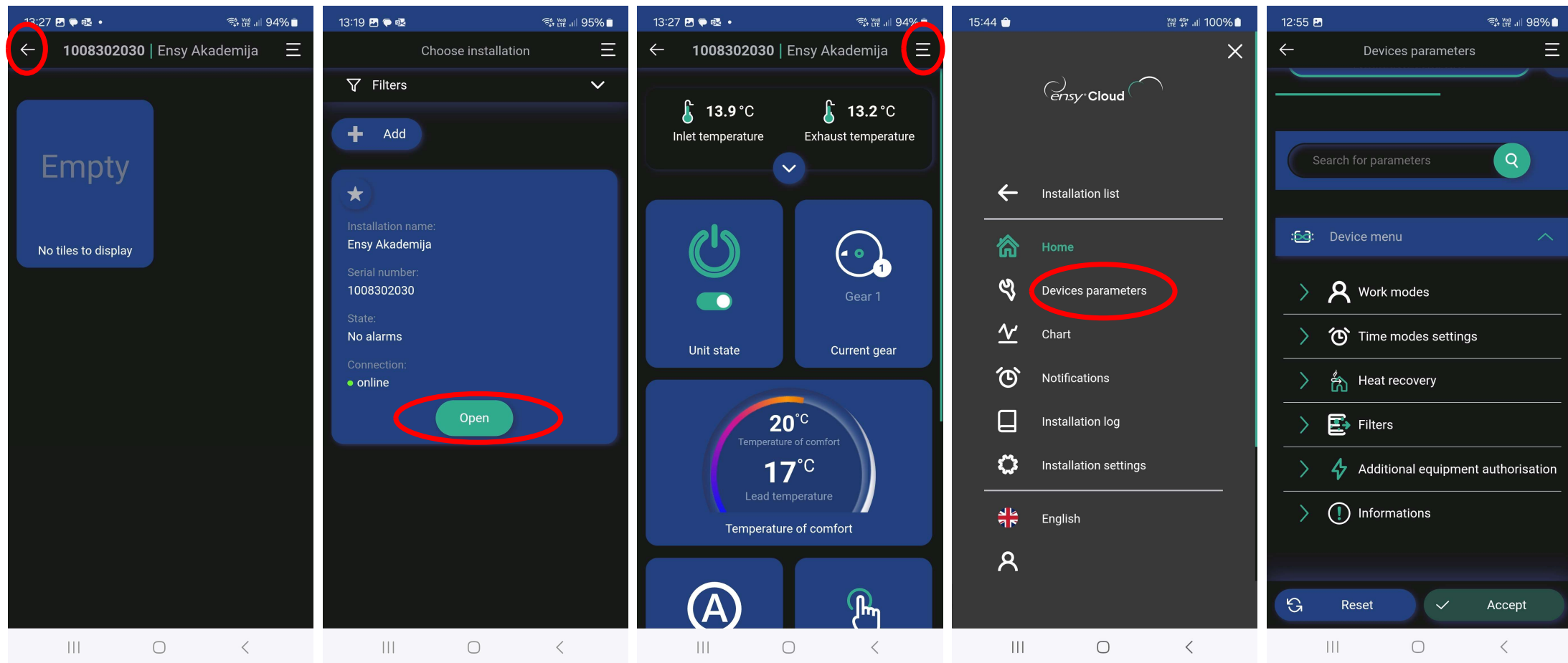


Working in the ENSY CLOUD system

Connecting to a device in ENSY CLOUD without installer invitation



Press back, then select installation and press Open . Now you can control the selected device and adjust its parameters

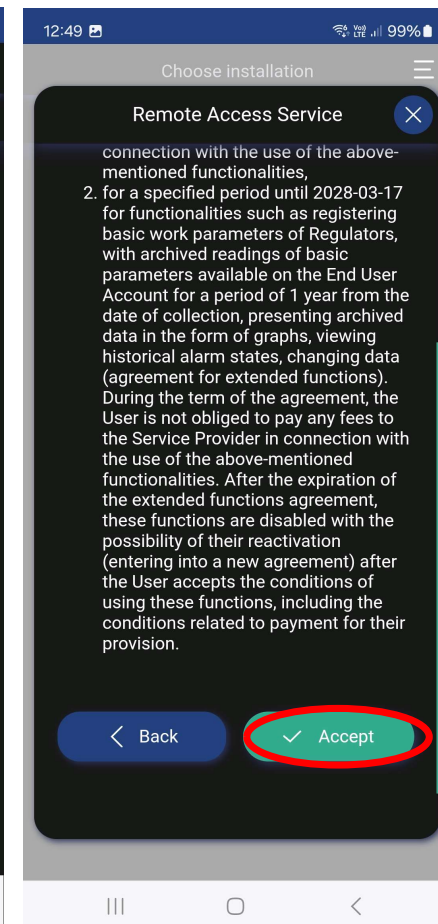
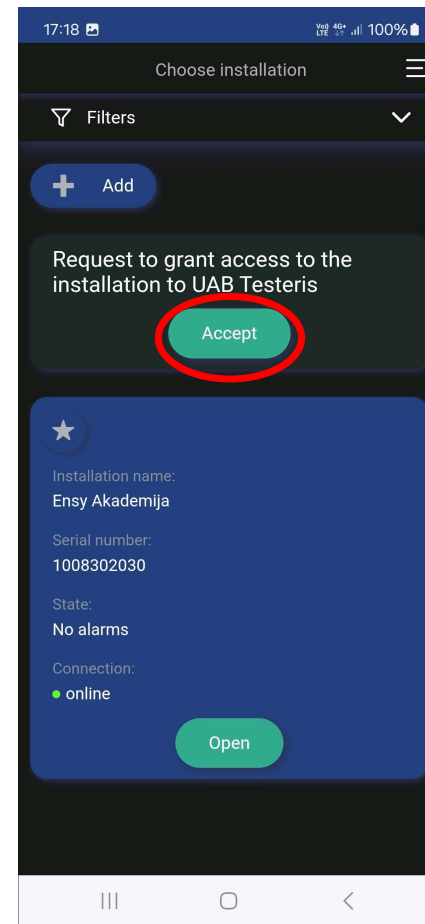
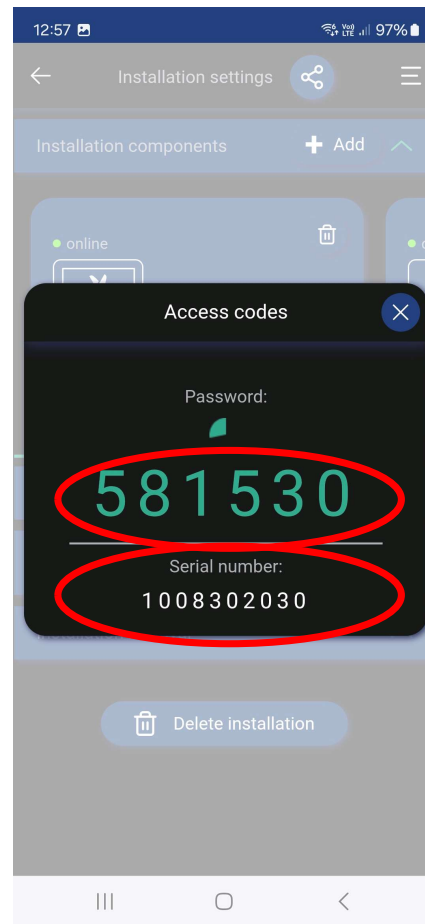
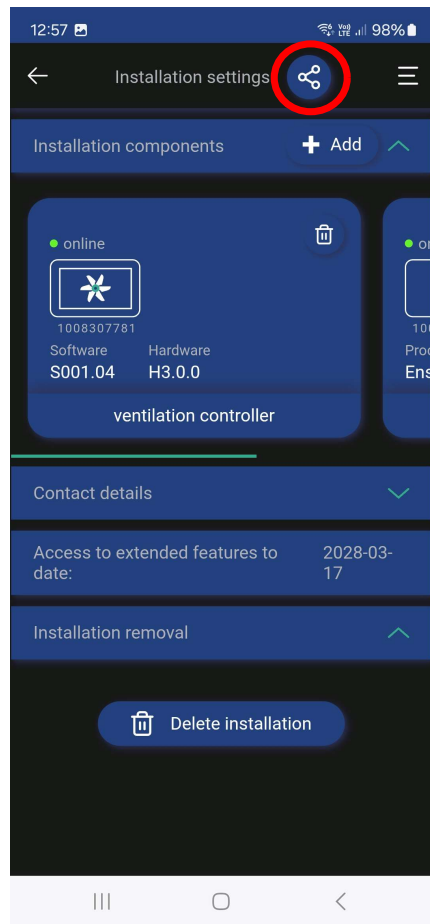
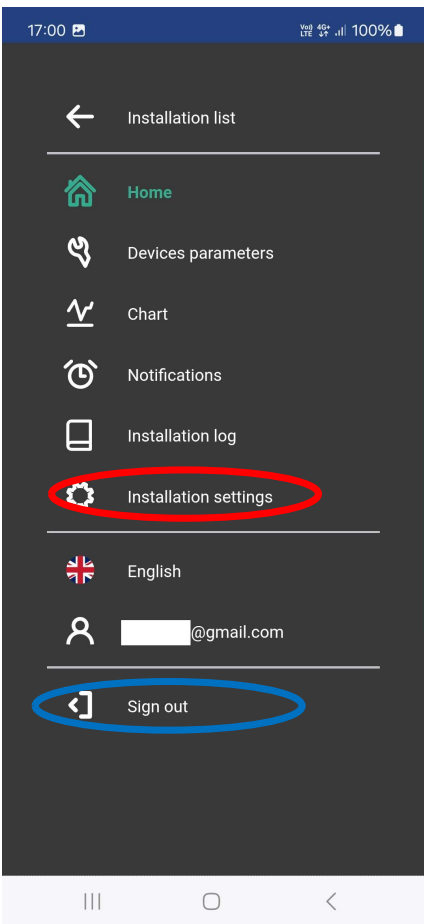


Working in the ENSY CLOUD system

Granting access to an installer or sales department



Go to the menu and select the installation settings. At the top, choose the sharing icon. An access code will be generated, which must be dictated along with the serial number to the person who wishes to administer the device. The code is valid for 30 seconds, so it must be dictated while the connection attempt is in progress. After installer got and enter code to his app, the user must log out of the account via the menu and log in again. In the main menu, the newly appeared access request must be accepted, and the terms must be approved. Once this is done, the installer or service department will be able to administer the device



Working in the ENSY CLOUD system



Connect to the device when requested by a user

In the app or browser, select Add. If using the app, choose the Manual method. Enter the device name and serial number (to be dictated by the user). Then input the app-generated code (also to be dictated by the user). Once completed and confirmed by user, the installer or service team will gain device with administration rights

